



THE BEAUTIES OF THE NIGHT

WATER INSTALLATIONS ARE TOO BEAUTIFUL TO ONLY BE SEEN DURING DAYLIGHT. WITH THE RIGHT ILLUMINATION FROM OASE, THE INSTALLATION CAN TAKE ON A SPECTACULAR APPEARANCE AFTER DARK AS WELL.

MARDAN PALACE HOTEL

Location: Antalya, Turkey

Reminding of Arabian Nights, the site of Mardan Palace Hotel in Antalya, Turkey is one of the most exclusive Hotels in the Mediterranean.

The installation combines water with laser and LED light and impresses by underlining the unique terrace architecture.

OASE reference object, left

Light and shadow have, for time immemorial, provided a special attraction. At night, when the surrounding environment becomes invisible, water installations can provide unrivalled beauty, and really stand out from their veiled surroundings.

Buildings appear aristocratically as soon as they are illuminated in the evening hours, trees and bushes become floodlit sculptures. He who controls the contact with light awakens emotions – equally, whether a festive mood or relaxing, romantic moments.

With the illumination technology from OASE, you have the necessary tools for effective light installations to hand:

- Underwater spotlights for water installations, fountains and floating aggregates
- Innovative LED technology provides a high level of light incidence, whilst being highly energy-efficient
- For a professional installation, transformers and cables are provided, along with the corresponding installation materials.



The Nozzle-Star LED from OASE has a concentric nozzle opening and illuminates fountains of up to approximately 7.5 m via its twin LED clusters.

• Halogen spotlights	page 74
• LED technology	page 86
Warm white light	
Profilux LED	page 86
Lunaqua 10 LED	page 86
RGB	
Best LED	page 88
Nozzle-Star LED	page 90
Twin-Star LED	page 91



PROFILUX E 100 AND E 101 HALOGEN

Thanks to the compact design the Profilux E 100 set and the E 101 also accentuate public areas with focused light effects and allow sculptures, water features, individual fountains, or plants, to radiate in light.

The housing of the halogen spotlight is made of robust stainless steel and is fitted with a PG 13.5 cable gland, as well as with a pivoting spotlight holder – also made of stainless steel.

The Profilux E 100 is only available as a complete set with 100 W bulb, 7.5 m cable, 105 VA safety transformer, and a thermal switch.

Product characteristics at a glance

- High-quality stainless steel spotlights
- Stainless steel bracket for simple and safe installation
- Halogen bulbs: 50 W, 75 W (E 101) and 100 W (E 100)
- With PG 13.5 cable entry

Accessories for Profilux E 100 / E 101 (must be ordered separately)

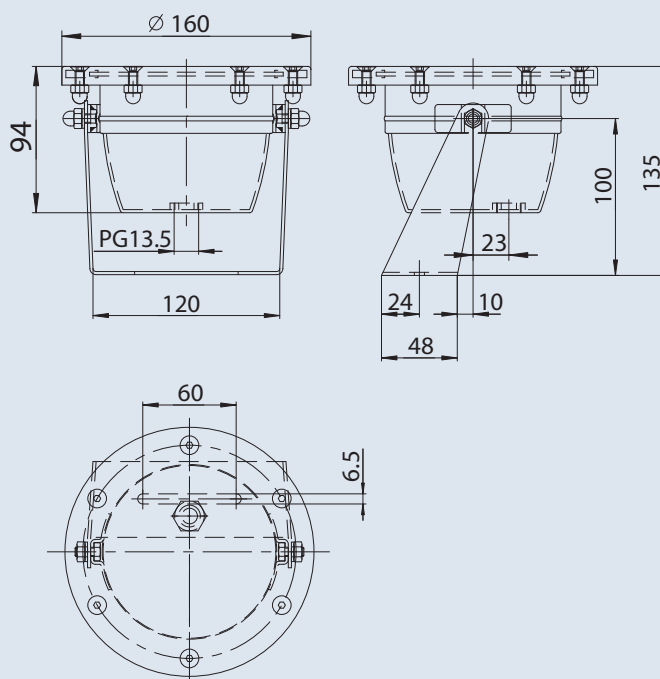
Halogen reflector bulb			
Voltage [V]	12	12	12
Power output [W]	50	75	100
Beam angle	24°	24°	24°
Order no.	52939	52941	52943



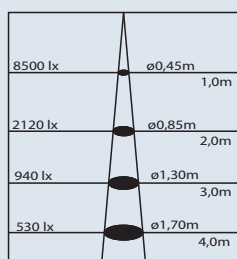
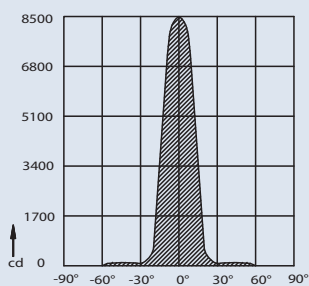
Profilux E 100



Profilux E 101

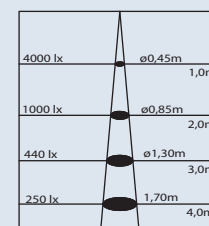
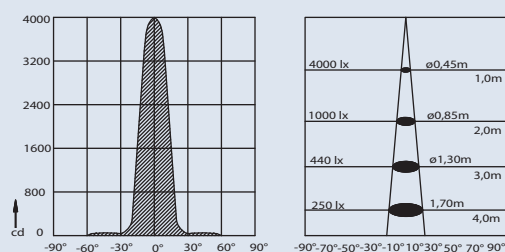


Halogen 100W 24°



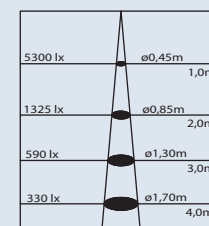
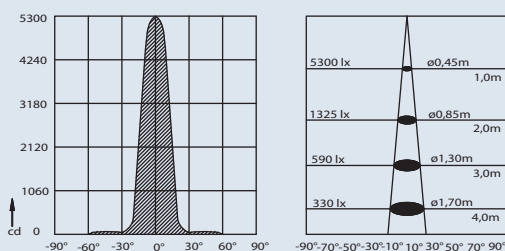
-90° -70° -50° -30° -10° 10° 30° 50° 70° 90°

Halogen 50W 24°



-90° -70° -50° -30° -10° 10° 30° 50° 70° 90°

Halogen 75W 24°



-90° -70° -50° -30° -10° 10° 30° 50° 70° 90°

	* Profilux E 100	Profilux E 101
Dimensions (ø x H) [mm]	160 x 135	160 x 135
Beam angle	24°	24°
Light intensity [cd]	8400	4000-5000
Bulb [V/Hz]	12 V / 50 Hz	12 V / 50 Hz
Power consumption max. [W]	100 W halogen	50, 75 W halogen
Protection class	IP 68	IP 68
Cable entries	1x PG 13.5	1x PG 13.5
Cable length [m]	7.5	-
Material	Stainless steel	Stainless steel
Weight [kg]	5.0	1.5
Order no.	56898	56133

* The Profilux E 100 is only available as a complete set including 100W light, 7.5m cable, a safety transformer with 105 VA and a thermo switch.



LUNAQUA 10 HALOGEN

With these compact spotlights exclusive garden and pond landscapes also give a good impression in evening and night hours. Deployed underwater they illuminate fountains and water features, above the water surface they illuminate the garden and park landscape.

The spotlight, made of impact-resistant plastic, is connected to the 12-Volt safety transformer via special connections that can also be used underwater. This means that even greater distances to the 230 Volt outlet can be bridged with conventional cable. The transformer is equipped with 4 couplings to connect either 4 x 35 W, 3 x 50 W or 2 x 75 W, 12 V.

The special structured glass cover, in conjunction with the aluminium reflector, creates optimal light efficiency. The mounting bracket enables a pivot range of approximately 180°.

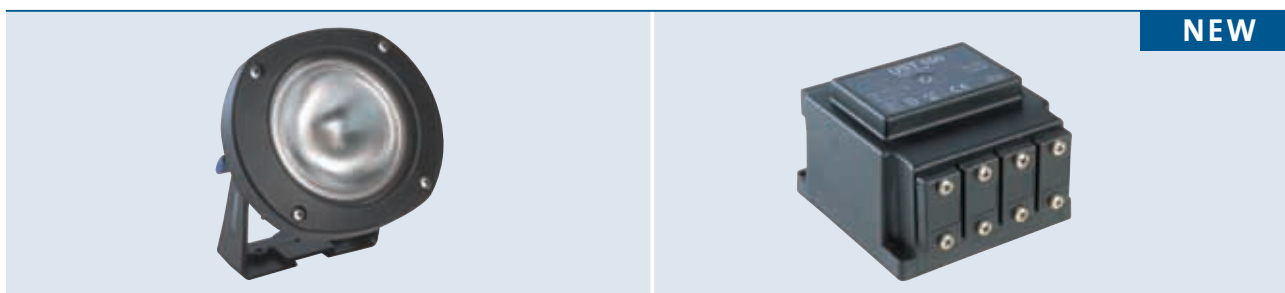
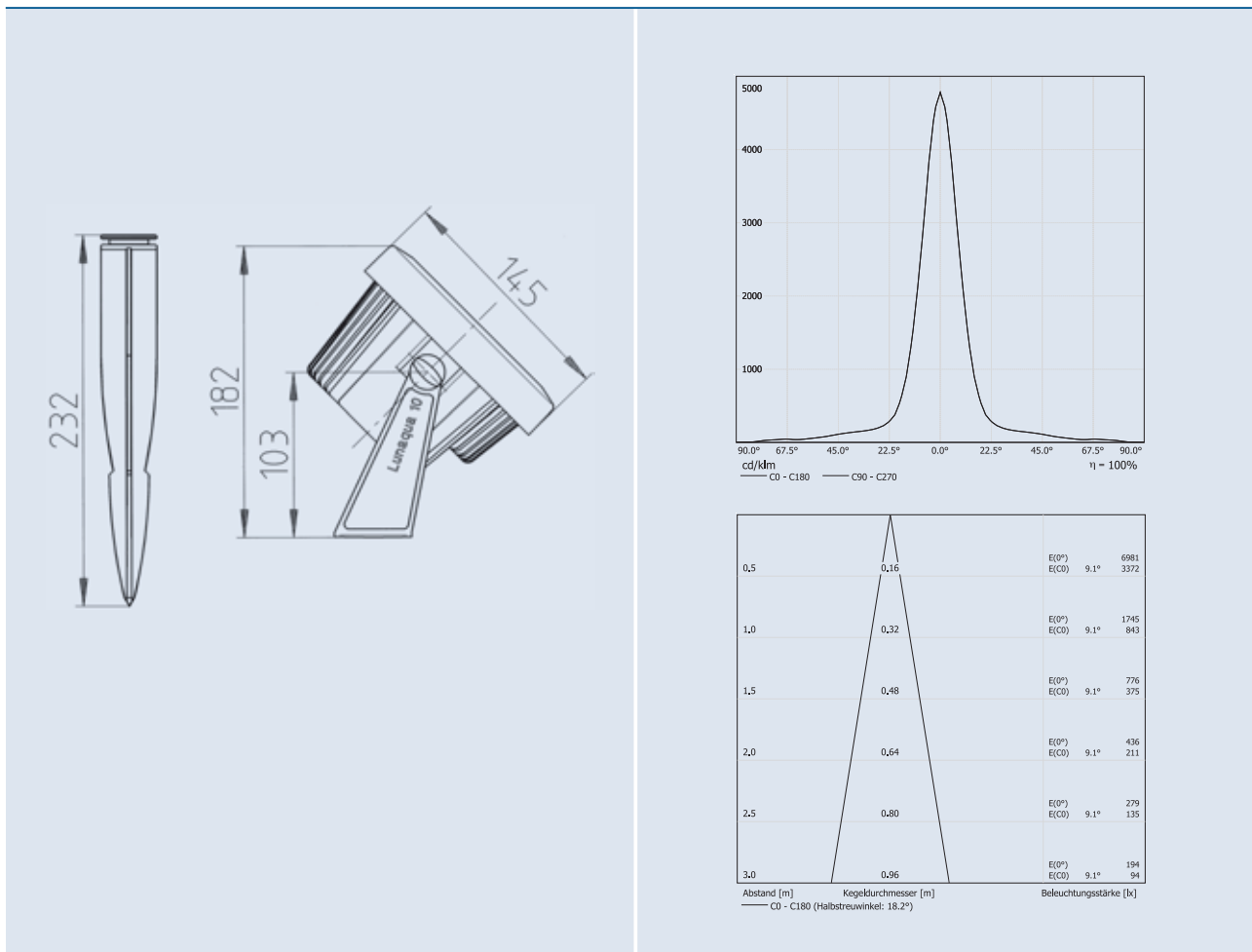
Product characteristics at a glance

- Accentuates with rich light effects
- Can be implemented underwater and above the water surface (excl. 75 W lamp)
- Housing made of impact-resistant plastic
- Structured special glass cover for optimal light efficiency
- Mounting bracket with 180° pivot range

Accessories (must be ordered separately)

Bulbs halogen bulb			
Colour	white	white	white
Voltage [V]	12	12	12
Power output [W]	35	50	75
Order no.	54035	54036	54037

Coloured lens				
Colour	blue	yellow	green	red
Weight [kg]	0.2	0.2	0.2	0.2
Order no.	56129	56130	56131	56132

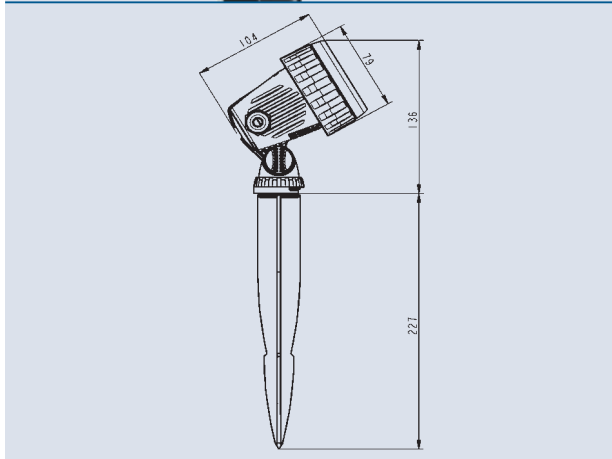


Spotlight Lunaqua 10 halogen		Underwater transformer UST 150/01	
• Housing made of impact-resistant plastic		• 4 couplings	
• Structured special glass cover and aluminium reflector for optimal light efficiency		• Connection of 4 x 35 Watt, 3 x 50 Watt or 2 x 75 Watt halogen spotlights	
• Pivot range approximately 180° thanks to the integrated mounting bracket		• Connection of 4 x 10 Watt Lunaqua 10 LED	
• Delivered without bulb, transformer and cable		• Connection of 8 x Profilux LED 12V/01 with 4 power boxes	
Dimensions in mm (ØxH)	160 x 100	Dimensions in mm (LxWxH)	140 x 140 x 59
Nominal voltage	12V/50 Hz	Primary voltage	230V/50 Hz
Bulb max.	35 – 75 W halogen	Secondary voltage	12 Volt
Beam angle	24°	Consumption	150 VA
Protection class	IP 68	Cable length	10.0 m
Weight	1.1 kg	Weight	4.5 kg
Guarantee*	2 years	Guarantee	2 years
Order no.	54034	Order no.	50401

*bulbs excluded from the guarantee

Please consider the informations given in the manual if you wish to connect existing and new Lunaqua 10 products!

LUNAQUA 3 SOLO



Lunaqua 3 Solo	
Dimensions (Ø x H)	79 x 104 mm
Cable inlets	2x PG 11
Cable diameter	H05 and H07
Power consumption (Halogen bulb)	max. 100 W
Suitable for nominal voltage	12 V
Protection class	IP 68
Mounting	G 4
Beam Angel	10° – 40°
Weight	0.6 kg
Order no.	57141

With the Lunaqua 3 Solo variant, single, as well as parallel, multiple spotlight connections can be installed.

The single unit for all purposes is ideal for installation above and below the water surface. Its beam angle is adjustable and ensures precise illumination of the desired object. Input and output are fitted with high-quality PG cable glands for H05 or H07 cable for simple installation.

Product characteristics at a glance

- Accentuates with rich light effects
- Can be implemented underwater and above the water surface
- For installation of individual and parallel lighting chains
- Adjustable beam angle
- Extremely corrosion resistant
- With ground stakes and mounting element
- Incl. 20 Watt bulb
- Supplied without cable and transformer

Accessories (must be ordered separately)

Replacment Halogen bulb		
Voltage [V]	12	12
Power output [W]	20	35*
Order no.	70703	54035

* 35 W is only possible in underwater operation!

Accessories (must be ordered separately)

Coloured lens set	
Colour	blue, yellow, green, red
Order no.	27565

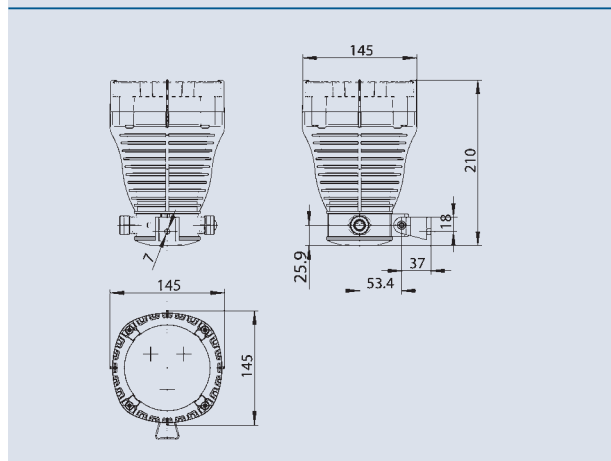
LUNAQUA 5.1

The Lunaqua 5.1 creates dazzling beauty, particularly underwater. This powerful spotlight brings even more light into the darkness and can also be installed in larger fountain systems.

Lunaqua 5.1 has been especially designed for underwater operation and can be operated with PAR 38 100 W reflector bulbs on 12 Volts. This powerhouse convinces by a perfect price/performance ratio, easy and safe installation, and versatile implementation as a single spotlight or in parallel group cabling. Input and output are fitted with high-quality PG cable glands for H05 or H07 cable.

Product characteristics at a glance

- Maximum power above the water surface or underwater
- Housing made of impact-resistant plastic
- Extremely corrosion resistant
- PAR 38 reflector bulbs with 100 W
- Including stainless steel mounting bracket
- Supplied exclusive of connection cable, transformer, and bulb



Accessories (must be ordered separately)

Reflector bulb PAR 38	
Voltage [V]	12
Power output [W]	100
Beam angle	30°
Weight [kg]	0.4
Order no.	56812

Lunaqua 5.1	
Dimensions (Ø x H)	145 x 210 mm
Cable inlets	2x PG 16
Cable diameter	H05 and H07
Power consumption	max. 100 W
Nominal voltage	12 V
Protection class	IP 68
Mounting	E 27
Cable length	–
Weight	1.2 kg
Order no.	57427



IMPRESSIVE OBJECTS

The illuminated fountain installation in Brunei is the highlight of the leisure parks. In Dallas, Texas (bottom left) the »Legacy Fountain« forms the focal point in the centre of restaurants and shops. In the 30m wide basin, 168 Twin-Star LED's illuminate the 20m high central fountain. Bottom right is portrayed an illuminated water feature on a roundabout in Bad Vilbel.

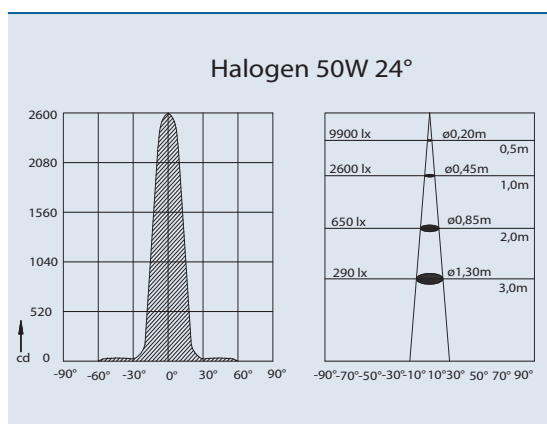
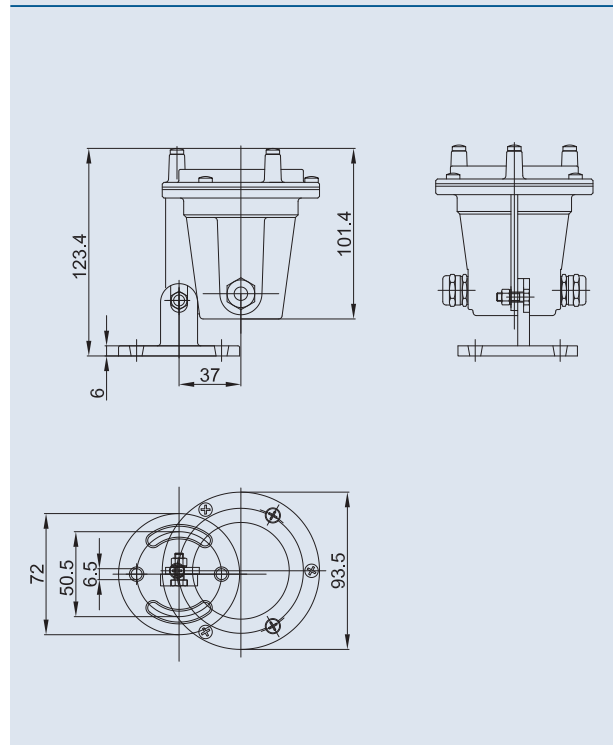
UWS TN 508

Individual fountains, water effects, or plants are easily illuminated with the small but robust UWS TN 508 spotlights.

The compact design with a robust and corrosion-resistant Tombac construction: The UWS TN 508 spotlight is ideal for use in public displays. And the PG 11 cable glands enable individual spotlights to be connected in a chain.

Product characteristics at a glance

- Accentuates with rich light effects
- Can be implemented underwater and above the water surface
- Power consumption: 50 Watts
- Can be switched in series for a lighting chain
- Corrosion-resistant tombac design
- Lamp included in the scope of delivery



Accessories (must be ordered separately)

Replacement Halogen reflector bulb	
Power consumption	50 W
Beam angle	24°
Order no.	51394

UWS TN 508	
Dimensions (ø x H)	94 x 125 mm
Nominal voltage	12 V
Power consumption	50 W
Light intensity	2600 cd
Beam angle	24°
Protection class	IP 68
Cable inlets	2x PG 11
Material	tombac
Weight	1.10 kg
Order no.	51446



UWS T 111/UWS TS 111 AND MULTI-POWER MP T 3

These underwater spotlights have been designed with extra strength for professional use in public installations. In underwater operation they effectively set the stage for fountains and water features, out of the water they illuminate sculptures, buildings, or trees.

They have been designed with appropriate stability and strength for their area of implementation. The spotlight housing is made of cast tombac and has a PG 16 cable gland for UWS T 111 / UWS T3 111 and PG 21 for MPT3.

Halogen reflector bulbs are protected by a 15 mm thick, shatterproof safety glass lens, which is screw-fastened to the housing. The smooth surface ensures long cleaning intervals.

The UWS TS 111 spotlight can be turned in all directions by 12.5° in its stainless steel installation housing. Two clamp rings enable precise alignment on site.

Product characteristics at a glance

- Extremely robust tombac and stainless steel design
- Safety glass cover
- Flat surface for easy cleaning
- Extremely corrosion resistant
- Can also be used out of the water
- Supplied exclusive of connection cable, transformer, and bulb

Accessories for UWS T 111/TS111 (must be ordered separately)

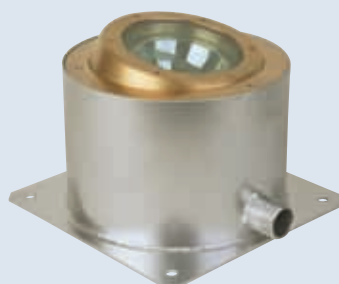
Halogen reflector bulb 12 V				
Colour	white	white	white	white
Power Output [W]	50	75	100	100
Beam angle	24°	24°	10°	24°
Order no.	52939	52941	52942	52943

Accessories for Multi-Power MP T 3 (must be ordered separately)

Halogen reflector bulb 12 V		
Colour	white	white
Power Output [W]	50	75
Beam angle	24°	24°
Order no.	52920	52923



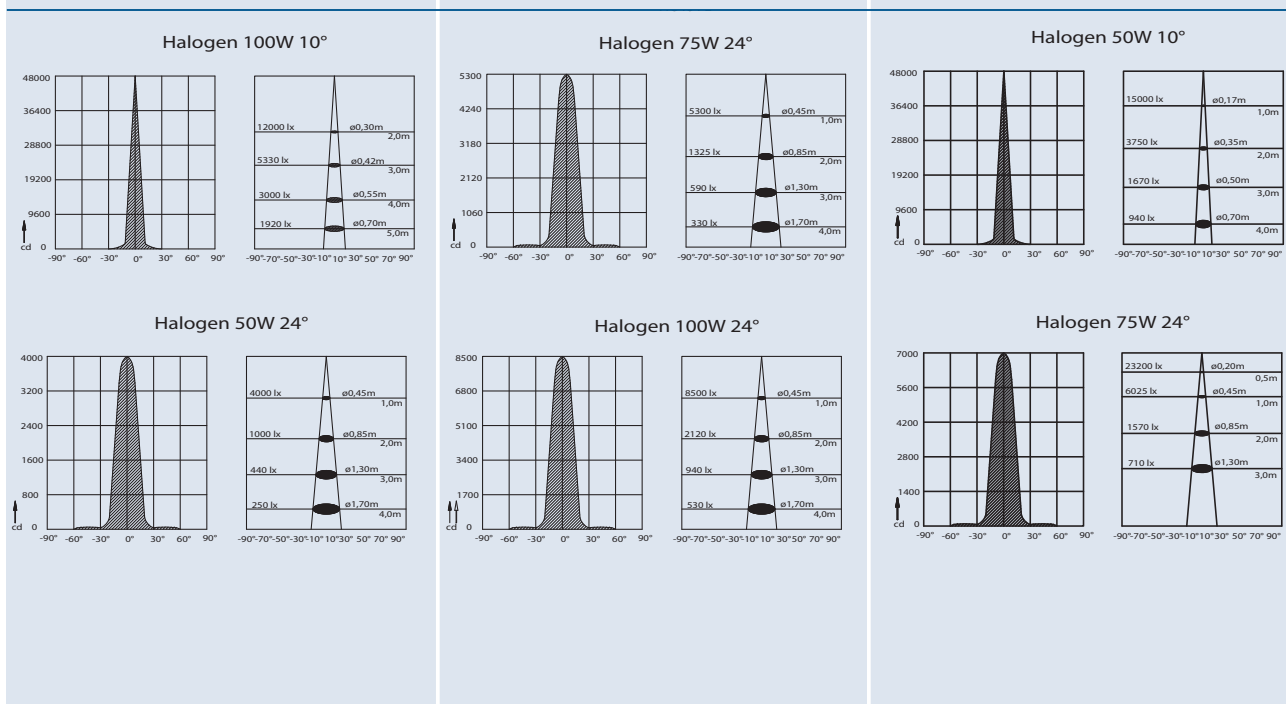
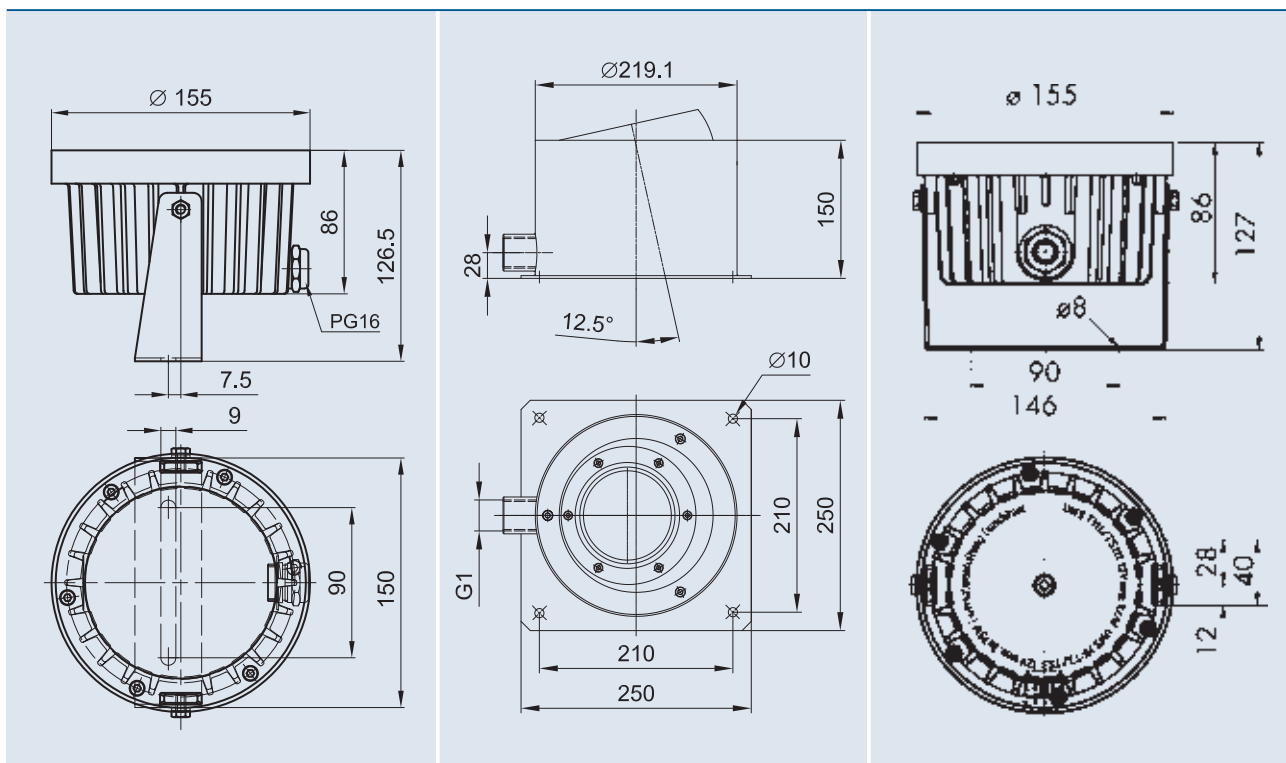
UWS T 111 / PG 16



UWS TS 111 / PG 16



Multi-Power MP T 3 / PG 21



Underwater spotlight		UWS T 111	UWS TS 111	Multi-Power MPT 3
Dimensions (Ø x H)	[mm]	155 x 127	219 x 155	155 x 127
Nominal voltage	[V]	12	12	12
Power consumption	[W]	50, 75 or 100	50, 75 or 100	3 x 50 or 75
Light intensity	[cd]	4500 – 50000	4500 – 50000	7500 – 45000
Beam angle		10° or 24°	10° or 24°	10° or 24°
Protection class		IP 68	IP 68	IP 68
Cable inlets		1, PG 16	1, PG 16	1, PG 21
Material		tombac/stainless steel	tombac/stainless steel	tombac/stainless steel
Cable length		–	–	–
Weight	[kg]	4.0	11.0	4.5
Order no.		52904	52909	52908



UWS K 300

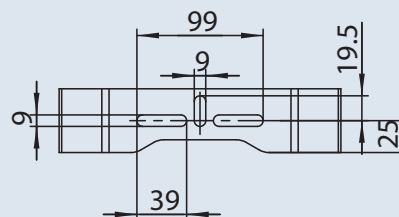
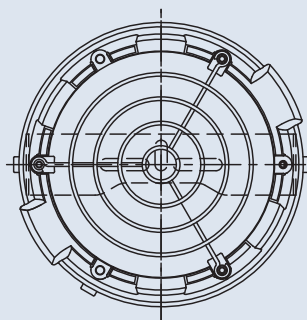
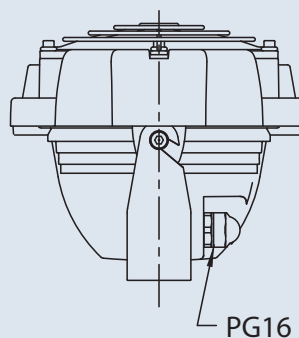
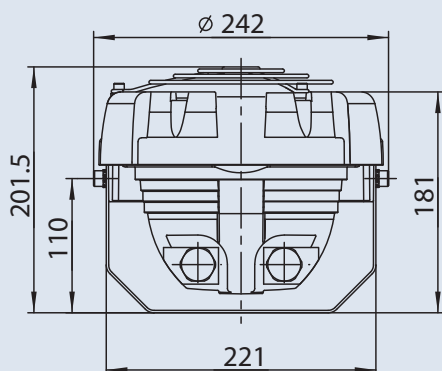
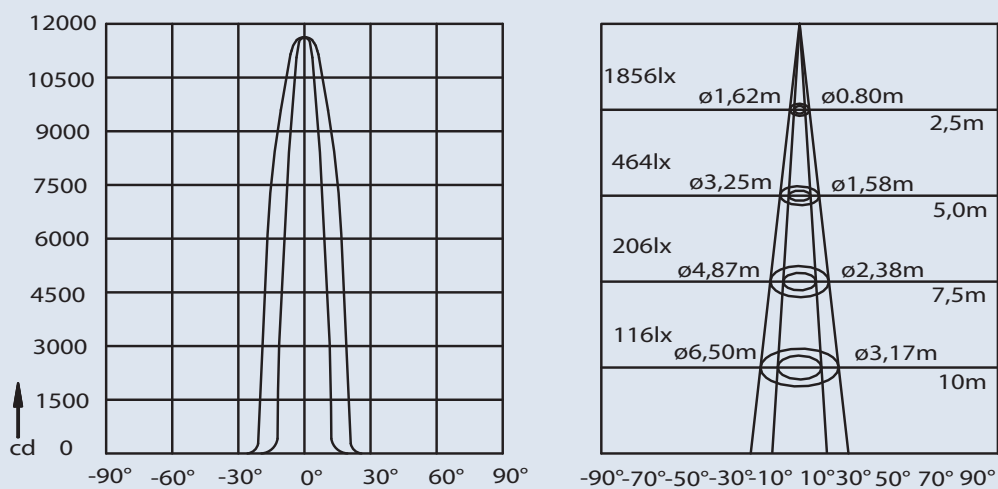
This spotlight has been especially designed for underwater operation. It is suitable for PAR 56 reflector bulbs. Its power output: 300 W / 12 V.

Included in delivery are a protective grill and a stainless steel mounting bracket.

Product characteristics at a glance

- Housing made of impact-resistant plastic
- Can be fitted with a strong 300 Watt bulb
- With protective grill and mounting bracket of stainless steel
- For focused effect illumination





Accessories (must be ordered separately)

Reflector bulb PAR 56, 12 V	
Colour	white
Power output	300 W
Beam angle	40° or 16°
Order no.	51984

UWS K 300	
Dimensions (ø x H)	242 x 201 mm
Nominal voltage	12 V
Power consumption	300 W
Light intensity	11600 cd
Beam angle	38° or 16°
Protection class	IP 68
Cable inlets	2x PG 16
Material	plastic/stainless steel
Weight	2.6 kg
Order no.	57288



PROFILUX LED / LUNAQUA 10 LED

Our well-proven spotlights are now equipped with a warmwhite, energy efficient LED platine with an impressive illumination of up to 12 m. Both reduce their illumination should the surrounding temperature increase to avoid damaging the platine and are applicable at voltages of 12 V and also 24 V.

Product characteristics Profilux LED

- 12 V AC/24 DC compatible
- Stainless steel housing, warmwhite LED platine
- Up to 8 spotlights of the 12V version can be connected to transformer UST 150 by using the power boxes
- Temperature protection
- Incl. illuminant (not dimmable)

Product characteristics Lunaqua 10 LED

- LED Spotlight warmwhite
- Compatible with connection cable and transformer of the Lunaqua 10 Halogen system
- 12 V/24 V
- Incl. illuminant (not dimmable)

Accessories (must be ordered separately)

Under water transformer UST 150/01 (see page 77)	
Primary voltage	230 V/50 Hz
Secondary voltage	12 Volt
Consumption	150 VA
Order no.	50401

Matching cable 24V DC/01 (see page 155)		Order no.
Cable 24V DC /1.0 m/01		12762
Cable 24V DC /3.0 m/01		12552
Cable 24V DC /7.5 m/01		12553
Cable 24V DC /15.0 m/01		11720

Matching cable 12V AC/01 (see page 155)		Order no.
Cable 12V AC /1.0 m/01		12768
Cable 12V AC /3.0 m/01		12374
Cable 12V AC /7.5 m/01		12375
Cable 12V AC /15.0 m/01		11740

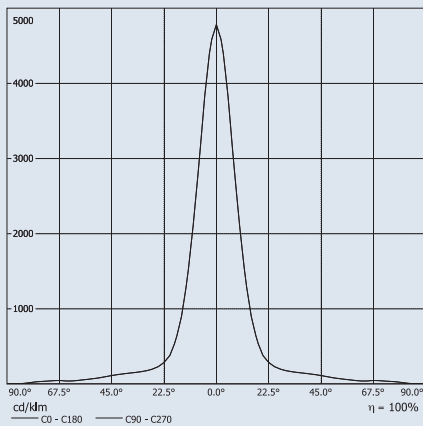
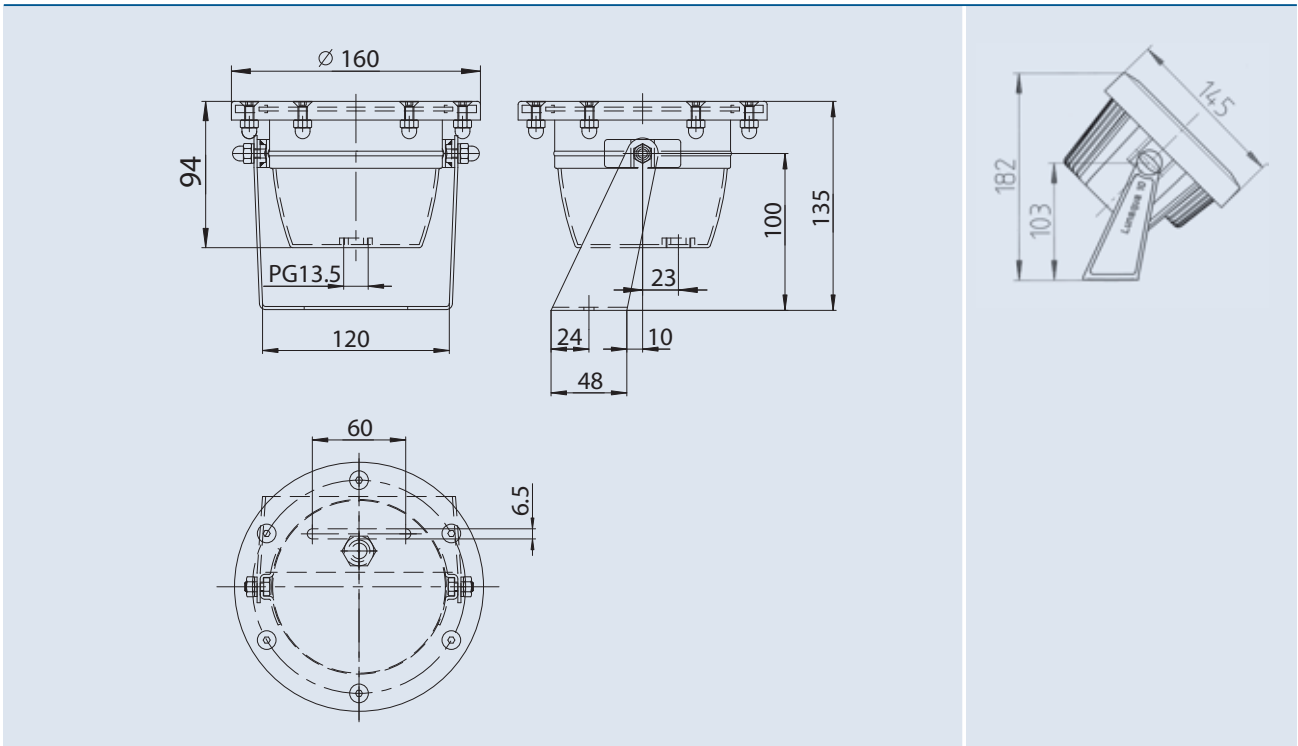
Power Box		Order no.
Power Box 12V AC/01		50492
Power Box 24V AC/01		50493

INNOVATION – MADE BY OASE



Profilux LED 12V/01 and Profilux LED 24V/01

Lunaqua 10 LED/01



Abstand [m]	Kegeldurchmesser (m)	E(0°) E(C0)	9.1°	Beleuchtungsstärke [lx]
0,5	0,16	E(0°) E(C0)	9.1°	6981 3372
1,0	0,32	E(0°) E(C0)	9.1°	1745 843
1,5	0,48	E(0°) E(C0)	9.1°	776 375
2,0	0,64	E(0°) E(C0)	9.1°	436 211
2,5	0,80	E(0°) E(C0)	9.1°	279 135
3,0	0,96	E(0°) E(C0)	9.1°	194 94

Abstand [m] Kegeldurchmesser (m) Beleuchtungsstärke [lx]
 — C0 - C180 (Halbstreuwinkel: 18.2°)

	Profilux LED 12V/01	Profilux LED 24V/01	Lunaqua 10 LED/01
Dimensions (ø x H)	[mm] 160 x 135	160 x 135	160 x 100
Voltage	[V/Hz] 12 AC / 50-60	24 DC	12 AC / 24 DC / 50
Power consumption max.	[W] 10 W	10 W	10 W
Light intensity; Luminous flux [cd];[lm]	1800; 370	1800; 370	1800; 370
Beam angle	20°	20°	20°
Protection class	IP 68	IP 68	IP 68
Dimmable	no	no	no
Cable length	[m] 1.0 (with box)	1.0 (with box)	—
Material	Stainless Steel	Stainless Steel	Plastic
Weight	[kg] 2.5	2.5	1.6
Guarantee*	2 years	2 years	2 years
Order no.	50367	50474	50366

* bulbs excluded from the guarantee

Please consider the informations given in the manual if you wish to connect existing and new products!



BEST LED

These small LED ground-installed spotlights are suitable for almost anything. They can be built into practically any natural stone or paving. This makes them ideal for use in pool installations without open water surfaces.

Nozzles can be integrated in the middle of the LED spotlights if the spotlights are used to illuminate fountains. Thus attractive symmetric illumination with continuously changing colour nuances is produced.

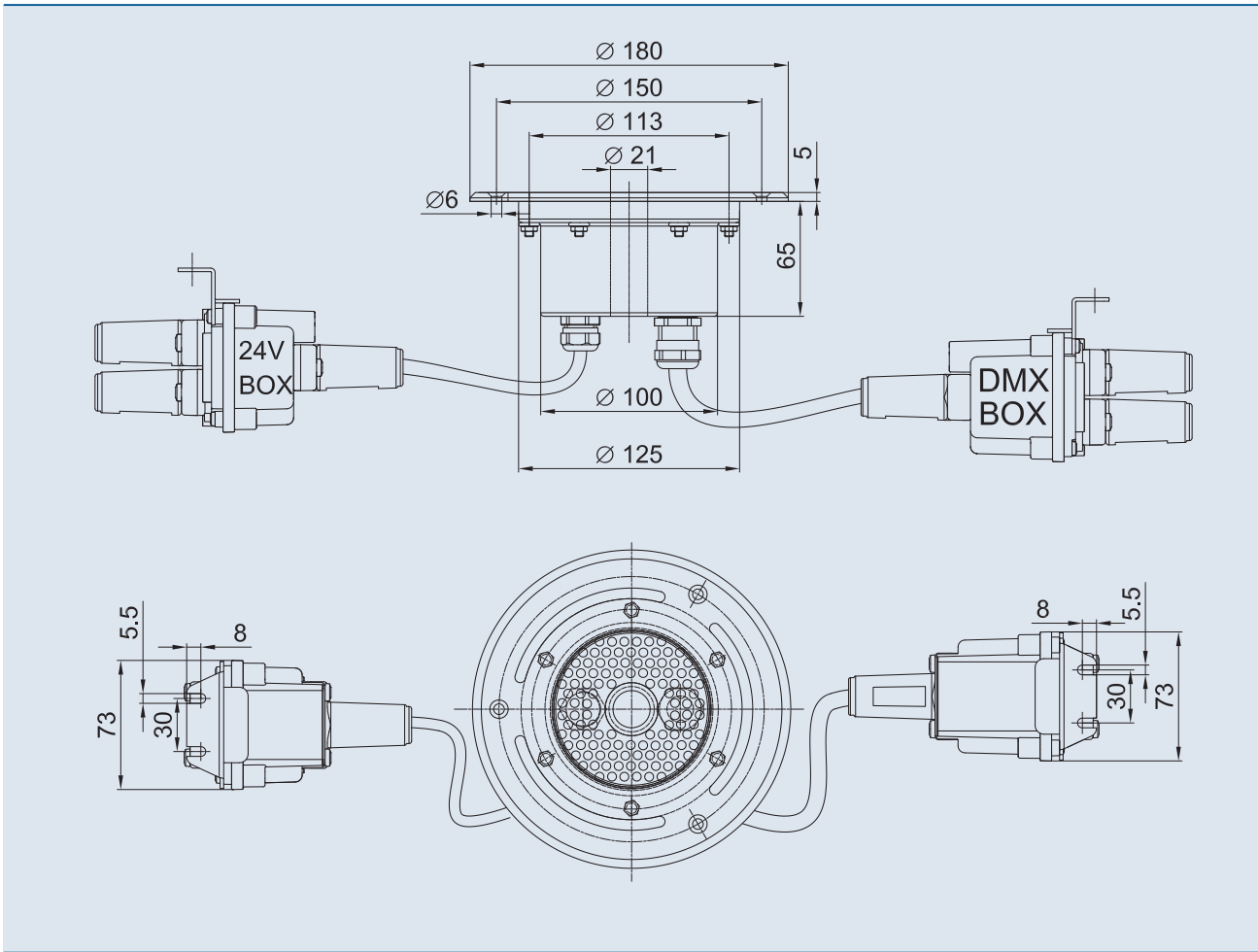
However these robust colour wonders show their full strength when combined with the Vario-Switch system. In combination they pave the way for a completely new composition of open space and fountain installations.

Product characteristics at a glance

- High-performance LED ground-installed spotlights
- Energy-efficient
- Integrated electronics
- Centred opening for different-size nozzles
Recommendation: Comet 10-12 T long or Comet 10-14 T long (not supplied)
- Edge mount/fixture in stainless steel
- Extremely long illuminant life
- Extremely compact design
- Multi-colour switchable can be individually controlled via OASE Easy Control (not supplied)
- Wet or dry installation

DMX-Channel	Function
Channel 1	red
Channel 2	green
Channel 3	blue
Channel 4	nozzle
Channel 5	bypass





Accessories (must be ordered separately)

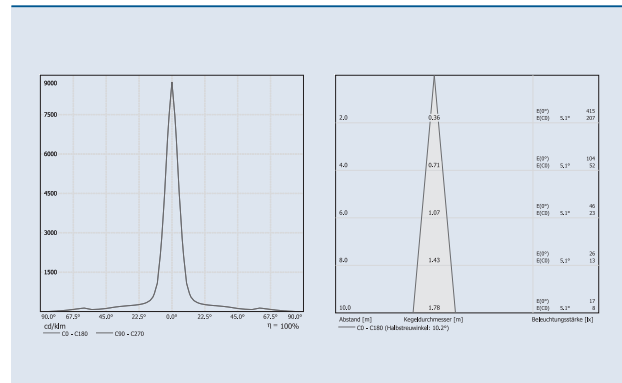
Recommended Nozzles	Order no.
Comet 10-12 T long	56780
Comet 10-14 T long	50218

Connecting cable DMX/01 (see page 154)	Order no.
Connecting cable DMX/1.0 m/01	12368
Connecting cable DMX/3.0 m/01	12369
Connecting cable DMX/5.0 m/01	12371
Connecting cable DMX/10.0 m/01	12372
Connecting cable DMX/20.0 m/01	12373
End Resistant for Bus-System DMX/01	12007

Connecting cable 24V DC/01 (see page 155)	Order no.
Connecting cable 24V DC /1.0 m/01	12762
Connecting cable 24V DC /3.0 m/01	12552
Connecting cable 24V DC /7.5 m/01	12553
Connecting cable 24V DC /15.0 m/01	11720

Nozzle-Chamber (see page 155)	Order no.
Nozzle-Chamber Single	50477
Nozzle-Chamber Vario	50478

Easy Control (see page 160)	Order no.
	50289

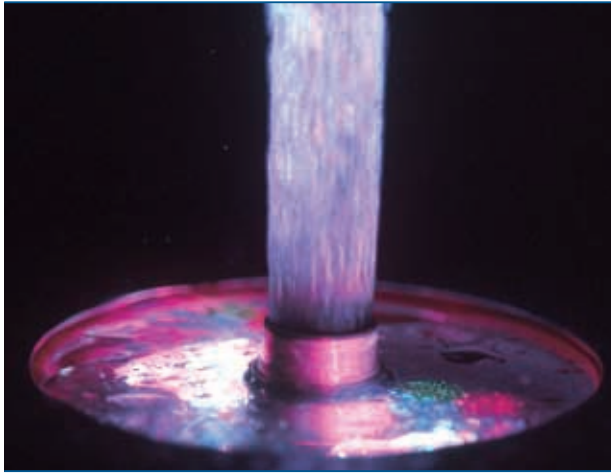


BEST LED /DMX/01	
Dimensions (Ø x H)	180 x 65 mm
Nominal voltage	24 V DC
Consumption	0.8 A
Power consumption	20 W
Thickness of safety glass	6 mm
Illumination range	ca. 3.0 m
Nominal current	0.75 A
Weight	3.5 kg
Protection class	IP 68
Power connection	1.0 m with Box
DMX connection	1.0 m with Box
Material	stainless steel / tombac
Order no.	50338

Tip

They are ideal in combination with the Vario-Switch, page 108! Additional information concerning DMX is available on page 160.
Fountain heights and pressure requirements see page 95 by Comet 10-14 T.
Detailed information and accessories are available on the Internet at www.oase-livingwater.com

NOZZLE-STAR LED /DMX/01

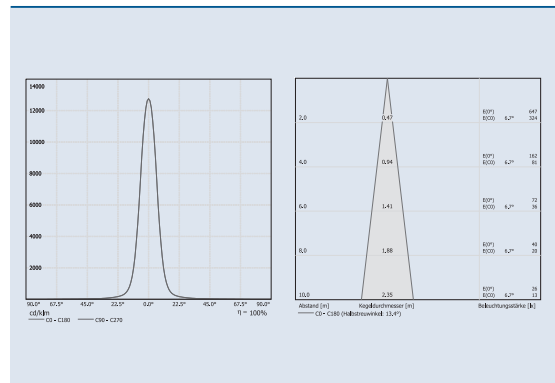
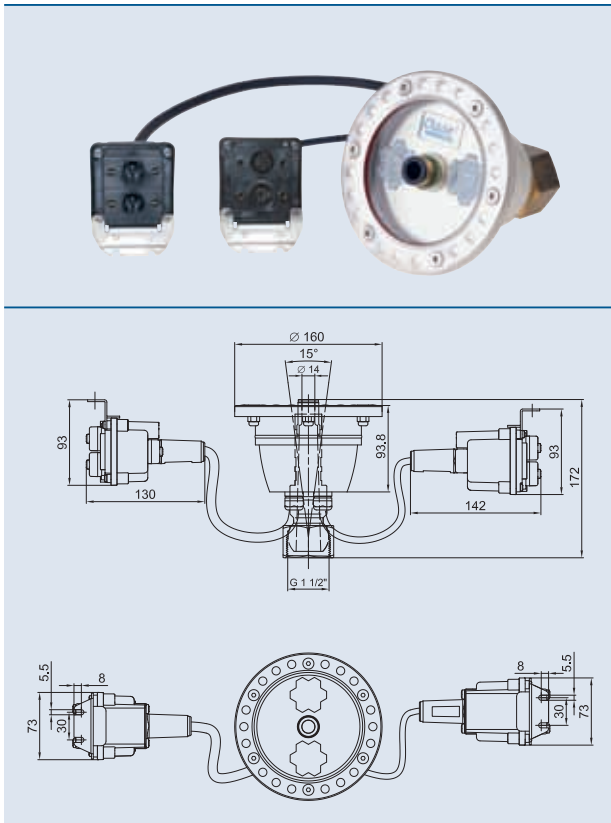


This concentric LED spotlight serves as nozzle opening and illumination at the same time.

The nozzle opening produces a fountain height up to 7.50 m and is illuminated by the two 36 W LED clusters in wonderful colours. The ball joint allows 15 degree adjustment in all directions.

Product characteristics at a glance

- LED spotlight nozzle opening
- Energy-saving
- Integrated electronics
- Adjustable stainless steel housing with ball joint
- Power consumption in preset RGB mode 36 W, unregulated
- Wet or dry installation
- Permanently waterproof
- Colours can be individually controlled by OASE Easy Control (must be ordered separately)



DMX-Channel	Function
Channel 1	red
Channel 2	green
Channel 3	blue
Channel 4	nozzle
Channel 5	bypass

Accessories (must be ordered separately)

Connecting cable DMX/01 (see page 154)	Order no.
Connecting cable DMX/1.0 m/01	12368
Connecting cable DMX/3.0 m/01	12369
Connecting cable DMX/5.0 m/01	12371
Connecting cable DMX/10.0 m/01	12372
Connecting cable DMX/20.0 m/01	12373
End Resistant for Bus-System DMX/01	12007

Connecting cable 24V DC/01 (see page 155)	Order no.
Connecting cable 24V DC /1.0 m/01	12762
Connecting cable 24V DC /3.0 m/01	12552
Connecting cable 24V DC /7.5 m/01	12553
Connecting cable 24V DC /15.0 m/01	11720

Easy Control (see page 160)	50289
-----------------------------	-------

Nozzle-Star LED /DMX/01	
Dimensions (ø x H)	160 x 172 mm
Nominal voltage	24 V / DC
Consumption Current	1.5/3.0 A
Power consumption	36 – 72 W
Beam angle	6°
Beam diameter	14 mm
Illumination range	ca. 7.5 m
Protection class	IP 68
Power connection	1.0 m with Box
DMX connection	1.0 m with Box
Material	stainless steel
Weight	3.6 kg
Order no.	50334

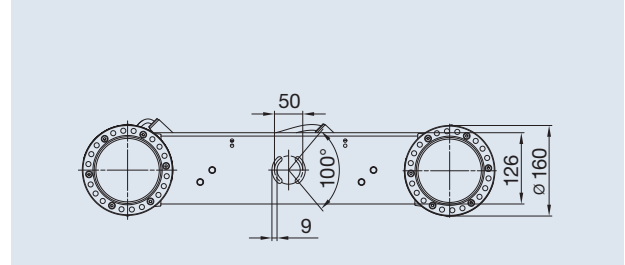
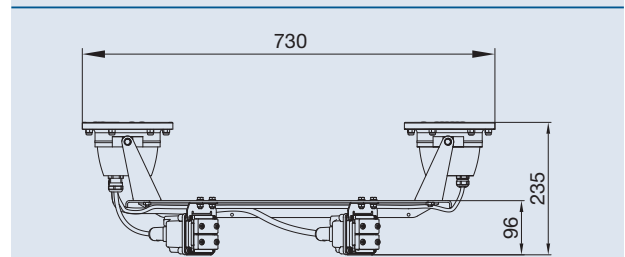
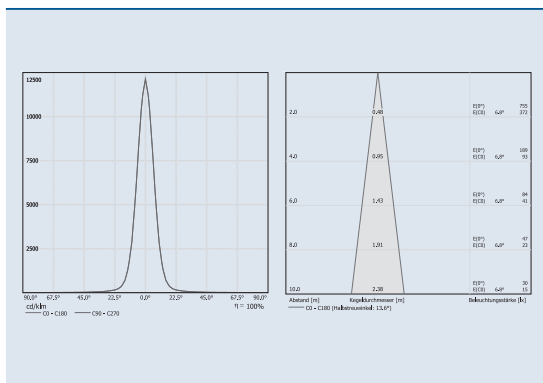
TWIN-STAR LED /DMX/01

Double the fun with innovative illumination technology from OASE: Our new LED Twin Star spotlights can illuminate fountains of up to 10 m in height.

The spotlights are placed at a distance of approx. 0.30 m to 0.50 m from the fountain. The spotlight housings are made of stainless steel, and each spot contains a max. 36W LED cluster. For an optimal, synchronous operation, both lights are mounted on a stainless steel fixture.

Produkteigenschaften auf einen Blick

- 2 LED spotlights with holder
- Energy-saving
- Integrated electronics
- Adjustable stainless steel housing with horizontal mounting bracket
- Power consumption in preset RGB mode 36W, in random mode 72W
- Wet or dry installation
- Permanently waterproof
- Colours can be individually controlled via Easy Control (must be ordered separately)



DMX-Channel	Function
Channel 1	red
Channel 2	green
Channel 3	blue
Channel 4	nozzle
Channel 5	bypass

Accessories (must be ordered separately)

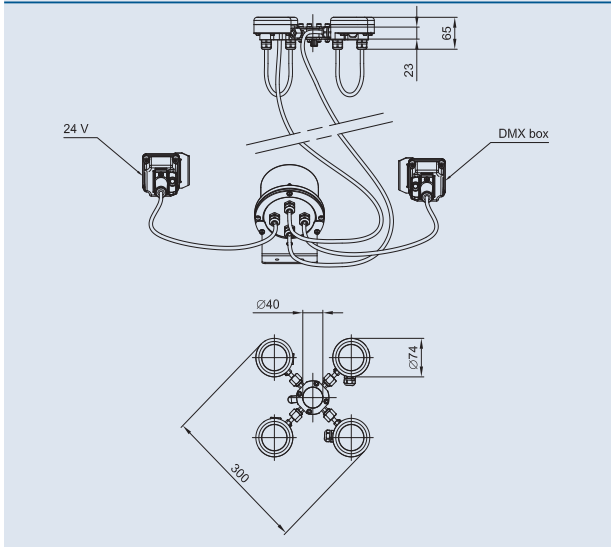
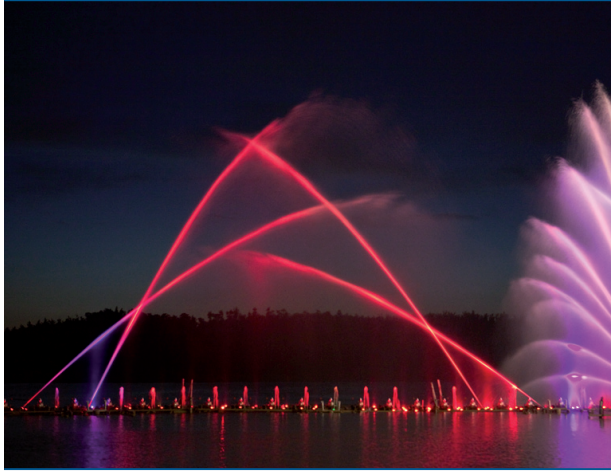
Connecting cable DMX/01 (see page 154)	Order no.
Connecting cable DMX/1.0 m/01	12368
Connecting cable DMX/3.0 m/01	12369
Connecting cable DMX/5.0 m/01	12371
Connecting cable DMX/10.0 m/01	12372
Connecting cable DMX/20.0 m/01	12373
End Resistant for Bus-System DMX/01	12007

Connecting cable 24V DC/01 (see page 155)	Order no.
Connecting cable 24V DC /1.0 m/01	12762
Connecting cable 24V DC /3.0 m/01	12552
Connecting cable 24V DC /7.5 m/01	12553
Connecting cable 24V DC /15.0 m/01	11720

Easy Control (see page 160)	50289
-----------------------------	-------

Twin-Star LED /DMX/01	
Dimensions (L x B x H)	730 x 160 x 235 mm
Nominal voltage	24 V/DC
Consumption Current	1.5/3.0 A
Power consumption	36 – 72 W
Beam angle	6°
Protection class	IP 68
Power connection	1.0 m with Box
DMX connection	1.0 m with Box
Illumination range	ca. 10.0 m
Material	stainless steel
Weight	4.5 kg
Order no.	50336

LED-MODUL / DMX/01



LED-Modul / DMX/01	
Dimensions (ø x H)	300 x 70 mm
Nominal voltage	24 V / DC
Consumption current	5.0 A
Power consumption	120 W
Beam angle	6°
Protection class	IP 68
Power connection	with box
DMX connection	with box
Illumination range	15 m
Material	stainless steel
Weight	5.0 kg
Order no.	50412

The LED-Cluster of the well-proven Nozzle Star LED by a factor of four, 30 W each.

With illumination heights of up to 15 metres, these LED modules are perfectly suited for the Comet and Fan jet together with the directional drives. The integrated water cooling allows the application at the nozzle directly – for ideal illumination results.

Product characteristics at a glance

- Energy efficient LED technology
- 4 Cluster, 30 W each, +/- 25° adjustable
- Integrated electronics
- Overheat control due to build in thermo sensor
- Adjustable flange, suitable for different nozzles
- With integrated water cooling
- IP 68 waterproof
- Colours can be directed by OASE Easy Control (not included in scope of delivery)
- Fresh, pool and saltwater proven

DMX-Channel	Function
Channel 1	red
Channel 2	green
Channel 3	blue

Accessories (must be ordered separately)

Connecting cable DMX/01 (see catalogue page 154)	Order no.
Connection cable DMX/1.0 m/01	12368
Connection cable DMX/3.0 m/01	12369
Connection cable DMX/5.0 m/01	12371
Connection cable DMX/10.0 m/01	12372
Connection cable DMX/20.0 m/01	12373
End Resistant for Bus-System DMX/01	12007

Connecting cable 24V DC/01 (see catalogue page 155)	Order no.
Connection cable 24V DC /1.0 m/01	12762
Connection cable 24V DC /3.0 m/01	12552
Connection cable 24V DC /7.5 m/01	12553
Connection cable 24V DC /15.0 m/01	11720

Easy Control (see catalogue page 160)	50289
--	--------------